

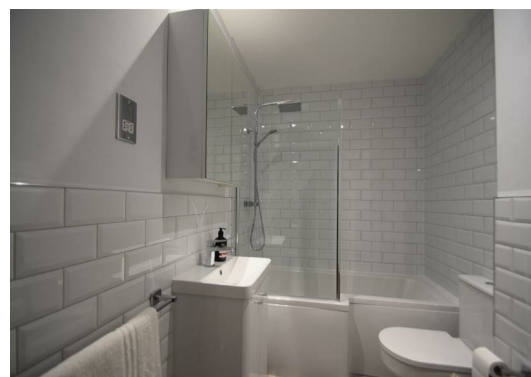
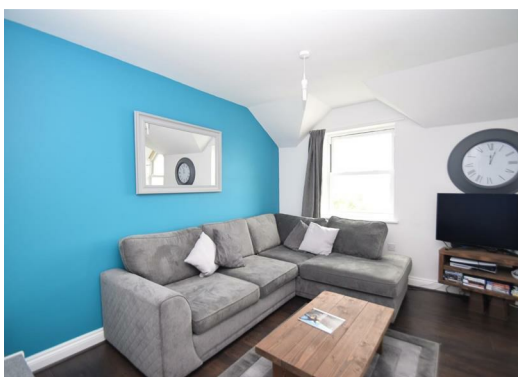


11 Preston Court 30 Upper Avenue, Eastbourne, BN21 3ZE

£189,950



An extremely well presented two bedroom top floor flat, with lift, which has been updated and refurbished by the current owner over recent months. Located conveniently for the town centre and railway station, and benefitting from residents parking, double glazing, electric heating and a long lease.



COMMUNAL ENTRANCE
HALL

With lift and stairs to upper floors.

PRIVATE ENTRANCE

Security intercom, wood effect laminate flooring.

LIVING ROOM/KITCHEN

18'2 max x 12'4 (5.54m max x 3.76m)
Two double glazed windows to front with views over roof tops, electric ceramic heater, television point.

KITCHEN AREA. Fitted with a range of wall and base mounted units with work surfaces and tiled splash backs. Single drainer stainless steel sink unit, fitted electric oven and hob. Integrated washing machine/dryer and refrigerator/freezer (installed 2023).

BEDROOM 1

10'1 x 8'7 (3.07m x 2.62m)
Double glazed window with views over roof tops, electric panel heater.

BEDROOM 2

12'5 x 8'7 max (3.78m x 2.62m max)
Double glazed window, electric panel heater.

BATHROOM

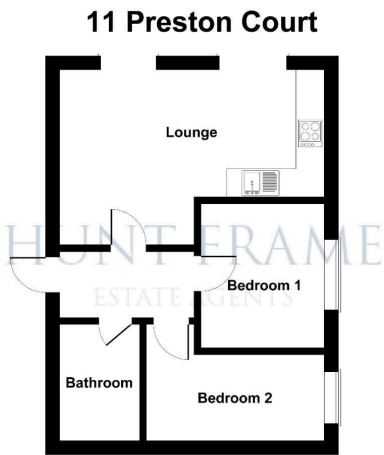
Fitted with a white suite comprising 'P' shaped bath with shower and screen, low level wc, hand basin with vanity cupboard. Extractor fan, shaver point, fan heater, partly tiled walls.

RESIDENTS PARKING

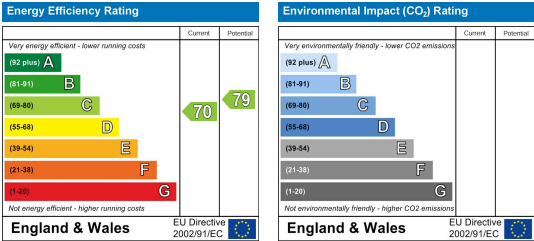
Located at the rear of the building, with bicycle rack and bin stores.

TENURE AND OUTGOINGS

Council Tax Band B
Lease 140 years remaining
Ground Rent £0
Buildings Insurance £223.95 PA
Maintenance £658.80 twice yearly



Not to Scale. Produced by The Plan Portal on behalf of Hunt Frame.
For Illustrative.



These particulars, whilst believed to be accurate are set out as a general outline only for guidance and do not constitute any part of an offer or contract. Intending purchasers should not rely on them as statements of representation of fact, but must satisfy themselves by inspection or otherwise as to their accuracy. No person in this firms employment has the authority to make or give any representation or warranty in respect of the property.